

# Lake Region Electric

A Touchstone Energy® Cooperative 

April 2020 Vol. 20 No. 12

# Cooperative Connections



**Cybersecurity  
and You**

Page 8

**Flood  
Preparedness**

Page 12

# Planning for Our Future



**Tim McIntyre**

General Manager  
tmcintyre@lakeregion.coop

**One question that we needed to answer was, "Where should our primary focus be?"**

The Lake Region Electric board of directors and management started the year off by participating in and completing a Strategic Planning Session. The purpose of a Strategic Planning Session is to take an overall look at where LREA is today and where we want to go in the future; all the while considering the future financial health of your electric cooperative.

Lindy LaChance and Darrin Lynch from Cooperative Finance Corporation (CFC) facilitated the two-day planning session. CFC is a nonprofit finance cooperative that provides expertise and financing to electric cooperatives. CFC hosts these planning sessions to help cooperative management and staff understand the direction that the board of directors want the cooperative to go and to help set achievable goals.

The entire board of directors, along with LREA Attorney Smeins and the management staff, attended this two-day meeting. We spent time identifying the key issues facing LREA. The next step in the Strategic Planning Session was to prioritize. One question that we needed to answer was, "Where should our primary focus be?" The board members and managers then needed to come together to discuss what is best for the member-owners we serve. Being fiscally responsible is always a priority for the leadership at Lake Region Electric Association. When planning for our future we must ask ourselves, "What will the proposed changes cost and how do those costs impact our member's electric rates?" Conversely, we must consider the risk to the quality of service and product that we deliver if we fail to plan ahead and make necessary changes.

Following completion of the session, the planning group achieved consensus on the following strategic goals:

- **Safety:** Continue to enhance and emphasize the culture of safety for the employees and general public.
- **Line Replacement:** Develop and deliver a plan to replace the aging assets of the cooperative, focusing on line replacement, underground conversion and Grenville substation reliability upgrades.
- **Financial Health:** Maintain the financial strength of the cooperative with a continued focus on the existing equity management plan and capital credit retirement practices while investigating time-of-use and demand rates.
- **Member Communications:** Enhance communication and member engagement by focusing on expanding the use of digital marketing techniques while strengthening the cooperative's status as the go-to expert relative to renewables, standby generation and distributed generation.
- **Technology:** Develop a technology plan with emphasis placed upon cybersecurity while also addressing the cooperative's need to implement next-generation metering technology and to capture and best utilize data for the benefit of the cooperative and its members.
- **Employees:** Create an employee workforce plan to address succession planning, ongoing employee training and education and enhancements to internal communication.

Just like any successful democracy, we want to be extremely transparent on our decision-making process here at LREA. We strive to keep our member-owners informed about the financial condition of your cooperative. We want you to be aware of anything that may affect your bill or services that LREA provides. We also want to keep our members well informed by providing information and educational opportunities through this magazine, our website and our social media pages.

You can trust that we have a plan for the future of your electric cooperative. Providing reliable power at competitive rates while creating a culture of safety are our top priorities! If you have any questions as to where your electric cooperative is going and why, please don't hesitate to call! You are a member-owner of Lake Region Electric Association and we are here to serve you.

Have a great month and God Bless,  
Tim McIntyre

## SAVE THE DATE

Lake Region Electric Association

### Annual Meeting

7 p.m. June 4  
Langford, S.D.





# Lake Region Electric Ripples

## Cooperative Connections

(USPS 018-904)

### Board of Directors

- Kermit Pearson, President
- Rodney Tobin, Vice President
- Thomas Steiner, Secretary
- Roger Kulesa, Treasurer
- Andrea Kilker
- Amy Kuecker
- Mark Wismer
- Danny Smeins, LREA Attorney

**General Manager:** Tim McIntyre

### Staff

- Donna Sattler, Director of Finance/Office Services Manager
- Jim Grimes, Manager of Operations
- Brett Kwasniewski, Manager of Member Services
- Tim Gaikowski, Manager of Technology Services



Lake Region Electric Association, Inc. is an equal opportunity provider and employer.

**Like us on Facebook:**  
Lake Region Electric Association Inc.

LAKE REGION RIPPLES COOPERATIVE CONNECTIONS is the monthly publication for the members of Lake Region Electric Association, Inc., PO Box 341, 1212 N Main St., Webster, SD 57274. Lake Region Electric Cooperative Connections' purpose is to provide reliable, helpful information to members on electric cooperative matters and better living. Subscription information: As part of their membership, Lake Region Electric members devote 50 cents from their monthly electric payments for a subscription. Nonmember subscriptions are available for \$12 annually. (USPS 018-904) Periodicals Postage Paid at Webster, SD 57274 and at additional mailing offices.

POSTMASTER: Send address changes to:  
Lake Region Ripples Cooperative Connections  
PO Box 341, Webster, SD 57274  
Telephone 605-345-3379;  
Toll Free 1-800-657-5869; Fax 605-345-4442  
E-mail:

**24 hour Dispatching/Outage Line**  
**1-800-657-5869**

Join the fun! #YE2020

South Dakota Rural Electric  
**YOUTH EXCURSION**  
July 27-30, 2020

The Youth Excursion Tour will be held July 27-30, 2020, and is headquartered in Bismarck, N.D.  
**All area high school freshmen, sophomores and juniors whose parents or guardians are members of Lake Region Electric Association, Inc., are eligible to apply.**

Teens attending this event will:

- Have the opportunity to sightsee and to meet new friends from other participating cooperatives.
- Learn about "The Story Behind the Switch" and see where South Dakota's electricity generates.
- Tour the Great Plains Synfuel Plant, Freedom Coal Mine and Antelope Valley Station Power Plant.
- Spend their evenings swimming, shopping and cruising on the Lewis and Clark Riverboat.

Lake Region Electric Association, Inc., will provide for transportation, lodging, meals, entertainment and sightseeing events. Students are required to supply their own personal/shopping money.

For More Information Contact:

Laura London  
london@lakeregion.coop  
**Lake Region Electric Association, Inc.,**  
PO Box 341  
1212 Main St.  
Webster, SD 57274  
605-345-3379  
lakeregion.coop  
facebook.com/Lake-Region-Electric-Association-Inc  
**Application Deadline:** April 1, 2020

### 2020 Youth Excursion Application

Student's Name: \_\_\_\_\_

Mailing Address: \_\_\_\_\_

Telephone: \_\_\_\_\_ E-mail Address: \_\_\_\_\_

Parent/Guardian's Name: \_\_\_\_\_

Mailing Address (if different from above): \_\_\_\_\_

Telephone: \_\_\_\_\_ E-mail Address: \_\_\_\_\_

Male or Female: \_\_\_\_\_ T-Shirt Size: \_\_\_\_\_

**Return this form by April 1 to:** Lake Region Electric Association,  
Attn: Laura London, PO Box 341, Webster SD 57274

**Welcome New LREA Members**

Amanda Lufkins  
Jacquelyn Spider

# Springtime Electrical Safety Tips

Now that the weather is warmer and people are spending more time outside, it's important to make sure certain electrical components are functioning properly and you are practicing good habits around electrical items both inside and outside of the home.

Focusing on electrical safety awareness can help ensure you are not injured due to an electrical malfunction.

According to the Electrical Safety Foundation International (ESFI), thousands of people in the United States are critically injured or electrocuted as a result of electrical fires and accidents in their own homes.

Here are some simple safety rules to remember:

- Ladders of every material should not come in contact with a power line, as it may result in a serious injury or death. Keeping a 10 feet distance from an overhead power line is a good rule of measure.
- If your power tools are not being used, make sure to unplug everything. If not, it's possible for the tools to overheat and cause a fire.
- Check for damaged cords on power tools. It is important to check if the cord is frayed or the plug is broken. This makes the tool dangerous to operate.
- Avoid wet areas while using any electrical item. Be aware of your surroundings, being sure to check for a running hose or sprinkler. Wet grass is particularly an issue.
- Teach kids to never fly a kite or climb a tree near a power line. If a kite gets tangled in overhead power lines, don't try to remove it yourself. Kite string can conduct an electrical current, which can cause serious injuries or death.
- Call 811 before you dig so underground utility lines can be properly marked. This free service is required by state law and should be done at least two business days before the digging begins.

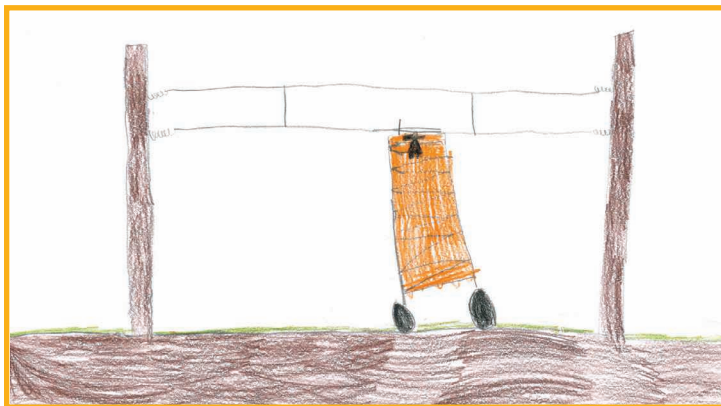
All electrical lines and equipment should be treated seriously and with caution.

Use these simple and easy to follow tips to stay safe this summer.

Source: [www.mrelectric.com](http://www.mrelectric.com)



## KIDS CORNER SAFETY POSTER



**"Do not cut power lines in half."**

**Annette Tschetter, 6 years old**

Annette is the daughter of Ryan and Elaine Tschetter, Revillo, S.D. They are members of Whetstone Valley Electric Cooperative, Milbank, S.D.

Kids, send your drawing with an electrical safety tip to your local electric cooperative (address found on Page 3). If your poster is published, you'll receive a prize. All entries must include your name, age, mailing address and the names of your parents. Colored drawings are encouraged.



# Appetizers and Beverages

## Pink Rhubarb Punch

8 cups chopped rhubarb	2 cups boiling water
8 cups water	2 cups pineapple juice
2 cups sugar	1/4 cup lemon juice
3 T. strawberry gelatin	Lemon-lime soda

In large saucepan, bring rhubarb and water to a boil. Reduce heat; simmer for 10 minutes. Drain, reserving liquid. In a large bowl, combine sugar, gelatin and boiling water until dissolved. Add pineapple and lemon juices. Stir in rhubarb liquid; chill. Just before serving, add soda or ginger ale as desired.

**Joyce Romkema, Springfield, S.D.**

## Jalapeño/Bacon Poppers

10 jalapeños	1-1/2 cup shredded Cheddar cheese
1/2 tsp. garlic powder	1/2 lb. bacon, cooked and crumbled
1/2 tsp. salt	1 (8 oz.) pkg. cream cheese, softened
1/4 tsp. pepper	
1/4 cup sliced green onions	

Slice each jalapeño in half lengthwise and use spoon to remove seeds and veins. Combine garlic powder, salt, pepper, green onions, Cheddar cheese, bacon and cream cheese. Spoon the mixture evenly in jalapeños and place on baking sheet. Bake at 400°F. for 20 minutes or until jalapeños are tender. Very flavorful but not hot to taste.

**Tina Haug, Pierre, S.D.**

## Spring Radish-Onion Spread

1 (8 oz.) pkg. cream cheese, softened	1/4 tsp. paprika
1/4 cup butter, softened	1 cup shredded radishes
1/2 tsp. celery salt	1/4 cup finely chopped green onions
1/2 tsp. Worcestershire sauce	Assorted crackers, chips or fresh veggies

Combine first 5 ingredients. Fold in radishes and onions. Cover and chill before serving.

**Elaine Rowett, Sturgis, S.D.**

## Jalapeño Cheddar Biscuits

2 cups flour	1 cup shredded Cheddar cheese
1 T. baking powder	2 green onions, thinly sliced
1 tsp. baking soda	<b>Honey Butter:</b>
2 tsp. McCormick Gourmet™ Jalapeño Pepper, Ground	1/2 cup (1 stick) butter, softened
1 cup buttermilk	3 T. honey
1/2 cup (1 stick) cold butter, cut into chunks	

For the biscuits, mix flour, baking powder, baking soda and jalapeño pepper in large bowl. Cut in butter with pastry blender or 2 knives until mixture resembles coarse crumbs. Add buttermilk; stir to form a soft dough. Stir in cheese and green onions. Drop dough by rounded 1/4 cupfuls about 2 inches apart onto parchment paper-lined baking sheet, forming 12 biscuits. Bake at 375°F. for 18 to 20 minutes or until golden brown. Cool on wire rack. Meanwhile, for the honey butter, mix butter and honey in small bowl until smooth. Serve with biscuits. Makes 12 servings.

*Nutritional Information Per Serving: Calories 270, Total Fat 18g, Fiber 1g, Cholesterol 51mg, Sodium 414mg, Carbohydrates 22g, Protein 5g*

**Pictured, Cooperative Connections**

## Mocha Freeze

2 cups vanilla ice cream, softened	1 T. chocolate syrup
1/4 cup cold strong coffee	1/2 cup crushed ice

In blender, combine all ingredients. Cover; blend until of desired consistency. Pour into glasses and serve immediately. Makes 4 servings.

**Becki Hauser, Tripp, S.D.**

Please send your favorite casserole, dairy or dessert recipes to your local electric cooperative (address found on Page 3).

Each recipe printed will be entered into a drawing for a prize in June 2020. All entries must include your name, mailing address, phone number and co-op name.

# Election to Be Held for Two Director Seats

Democratic Member Control is one of the Seven Cooperative Principles guiding Lake Region Electric Association, Inc. (LREA). Cooperatives, like LREA, are democratic organizations, controlled by our members who actively participate in setting policies and making decisions. Lake Region Electric Association is governed by a democratically elected board of directors; these elected representatives are accountable to the membership. The board of directors of Lake Region Electric Association, Inc. consists of seven members. Board members are elected to three-year terms at the annual meeting.

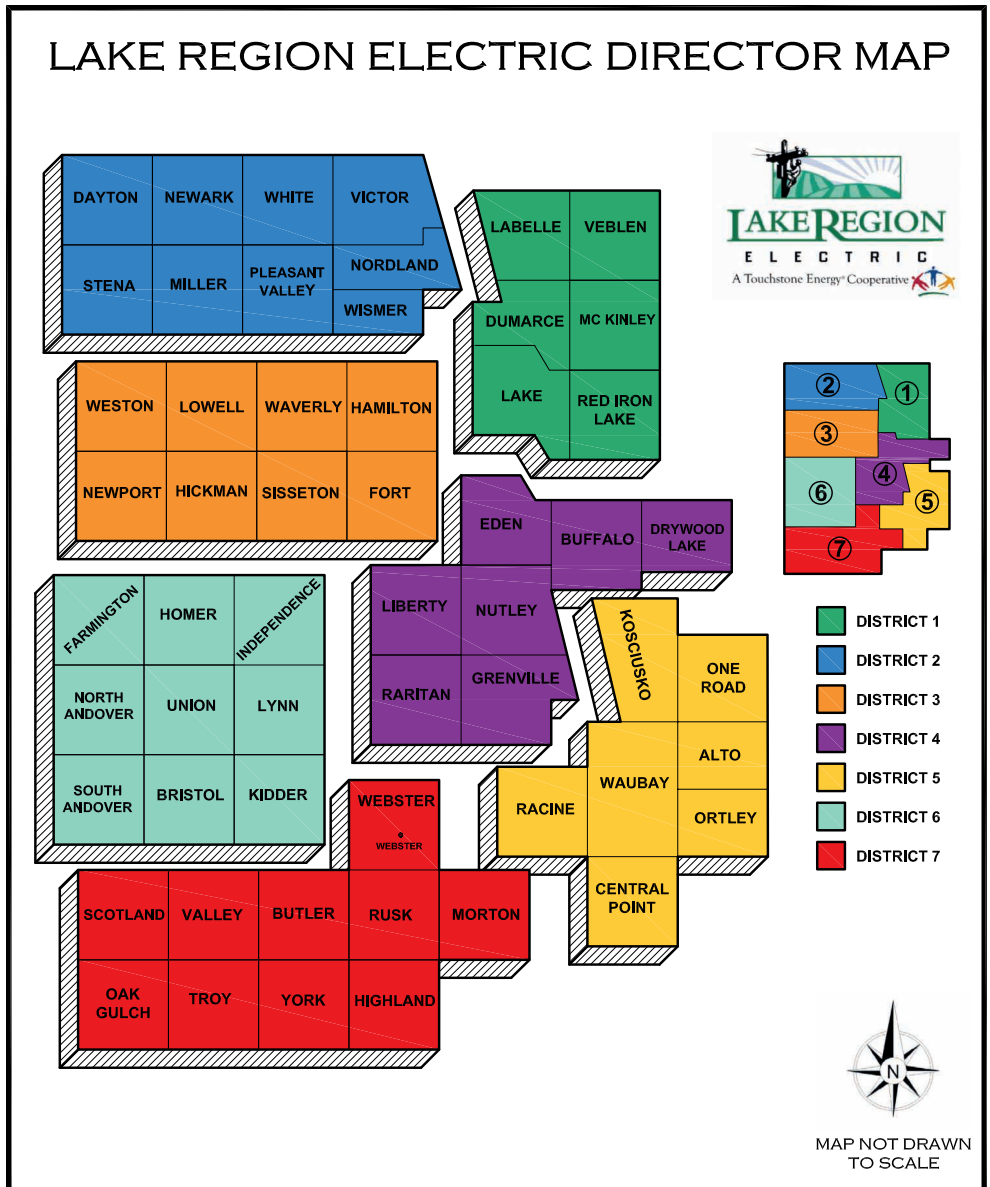
Two director seats will be up for election at the LREA annual meeting to be held in Langford on June 4, 2020, at 7 p.m. The seats up for election are District 2 and District 4. Individuals who wish to run for the board must file a petition signed by fifteen (15) fellow members 45 days prior to the annual meeting. Potential director candidates must be an active member of LREA and agree to attend all meetings. Nominations can be accepted from the floor during the annual meeting. Candidates will be published in the "Annual Meeting Notice to Members."

Serving on the board of directors is a commitment that requires representatives to attend local meetings on a monthly basis as well as state and national meetings. Board members attend trainings and pursue educational opportunities so that they are well informed on regulations and industry trends in order to best serve the members of Lake Region Electric Association.

Our service area is divided into seven districts, as shown on the Lake Region Electric Director Map, with each district being represented by an elected official. This year District 2 and District 4 are up for election. District 2, highlighted in blue, includes the townships of Dayton, Newark, White, Victor, Stena, Miller, Pleasant Valley, Nordland and Wismer. District 4 townships, highlighted in purple, include Eden, Liberty, Raritan, Grenville, Nutley, Buffalo and Drywood

Lake. District 2 is currently represented by Director Mark Wismer. District 4 is currently represented by Director Thomas Steiner. Both incumbents are eligible for re-election.

Members living in these districts who are interested in serving on the Lake Region Electric Association board of directors are encouraged to call 605-345-3379 toll free: 1-800-657-5869 or stop by our office at 1212 Main Street in Webster for more information or to request a petition. Those wishing to make a nomination from the floor must call the office in advance of the annual meeting to pre-check the candidate for eligibility.



# Bylaws

A full and true copy of the Bylaws of Lake Region Electric Association, Inc. is available to all members in a 20-page booklet. The document can be viewed in digital format by visiting the website: [Lakeregion.coop](http://Lakeregion.coop) and clicking on "Cooperative Mission and Guiding Principles" from the drop-down menu of the "myCooperative tab" near the top of the home page. Any member who wishes to receive a printed copy can stop by the LREA office at 1212 Main Street, Webster or call and request that one be mailed to you 605-345-3379 or 1-800-657-5869.

## Section 3. Qualifications

No person shall be eligible to become or remain a director of the Cooperative who is a close relative (father, mother, son, daughter, brother, sister, grandchildren, first cousins or stepchild) of an incumbent director or of an employee of the Cooperative, or is not a member in good standing of the Cooperative and receiving service at his/her primary residential abode or primary business, which must be located in the directorate district that the director is to represent; PROVIDED, that the designated representative of any non-human member, such as a corporation or its designee, shall notwithstanding that he/she does not receive services from the Cooperative at his/her primary residential abode, be eligible to become a director if (1) he/she is in substantial permanent occupancy, direction or use of the premises served by the Cooperative, and (2) is a permanent and year-round resident within the Cooperative's service area or residing not more than fifty (50) miles from the principal location of the non-human member that is being served by the Cooperative; BUT PROVIDED FURTHER, that no more than one such person as the designated representative may serve on the Board at the same time and in the event that he/she should resign or is unwilling to so act, that directorship shall become vacant. No person may become or remain a director of, or to hold any other position of trust in the Cooperative who does not have the legal capacity to enter into a binding contract, or is in any way employed

## Section 4. Nominations

Any fifteen (15) or more members acting together may make nominations for Board of Directors by a petition filed not less than forty-five (45) days prior to the annual meeting. If no nominating petitions are filed, it shall be the duty of the Board of Directors to appoint, not less than thirty (30) days before the annual meeting at which directors are elected, a committee on nominations consisting of not less than four (4) nor more than eleven (11) members who shall be selected from districts in which the vacancy exists so as to insure equitable representation. No member of the Board of Directors may serve on the committee. The committee shall prepare and file a report, at least twenty (20) days before the annual meeting, of a list of nominations for directors in such districts where no nominating petitions have been filed.

by or financially interested in a competing enterprise, or a business providing electric services to the Cooperative, or a business primarily engaged in selling electric appliances, fixtures or supplies to, among others, the members of the Cooperative. No person shall be eligible to become or remain a director of, or to hold any other position of trust in, the Cooperative who is not at least eighteen (18) years of age. No ex-employee, either retired or terminated, will be eligible to become a director of the Cooperative for at least 5 years after their employment ends. If a nominee for director lacks eligibility under this paragraph or as may be provided elsewhere in these bylaws, the chairperson presiding at the meeting at which such nominee would otherwise be voted upon shall disqualify such nominee.

If any person being considered for, or already holding, a directorship or other position of trust in the Cooperative lacks eligibility under this paragraph, the Board shall withhold such position, or cause such person to be removed therefrom, as the case may be. Nothing contained in this paragraph shall, or shall be construed to, affect in any manner whatsoever the validity of any action taken at any meeting of the Board, unless such action is taken with respect to a matter which is affected by the provisions of this paragraph and in which one or more of the directors have an interest adverse to that of the Cooperative.

The secretary shall mail, with the notice of meeting or separately but at least seven (7) days before the meeting, a statement of the number of directors to be elected and the names and addresses of candidates.

At the annual meeting, the chairman or his/her designee shall read the statement of the secretary as to number of directors to be elected and the names of nominees.

The chairman or his/her designee shall call for additional nominations from the floor and nominations shall cease after a reasonable time. No member may nominate more than one candidate. Any member intending to nominate a candidate from the floor shall notify the Cooperative prior to the opening of the meeting, to verify qualifications and willingness to serve.





# COOPERATIVE CYBERSECURITY

**Kaley Lockwood**

NRECA

Digital technologies and smart devices are facilitating greater information sharing by allowing people (and devices) to more efficiently communicate with each other. Internet-connected devices not only better enable us to stay in touch with loved ones, they simplify and streamline our lives by communicating with each other.

But greater connectivity comes with a cost.

Addressing the persistent and evolving reality of cyber threats is important for individuals and organizations alike. As people become increasingly interconnected and reliant on digital technologies, there are more opportunities for cyber threats that need to be addressed.

To this end, the National Rural Electric Cooperative Association (NRECA) launched RC3, the Rural Cooperative Cybersecurity Capabilities program, to help electric cooperatives build stronger cybersecurity programs. With funding from the U.S. Department of Energy, RC3 is developing tools to help cooperatives develop a culture of cybersecurity.

Electric cooperatives, large and small, are investing time and

resources to build stronger cyber defenses and increase their resiliency to cyberattacks. As co-ops ramp up capabilities in the beneficial use of digital technologies, they are integrating best practices to safeguard consumer data and grid operations from cyberattacks.

Electric co-ops are responding to the challenge, but are you? Cybercrime affects everyone – organizations, businesses and even individuals. Taking steps to protect your home network and devices from cyberattacks now will save you time and money in the long run.

## Here are a few tips to beef up your personal cybersecurity:

- Make sure you have antivirus software installed on your computer, and remember to keep it updated.
- Don't send e-mails containing personal information, like your date of birth or Social Security Number, because that increases opportunities for mal-actors to steal your identify. Be careful when entering a credit card number into a website – if you do, make sure that it's a secure website. You can tell if it's secure by looking for the "s" at the beginning of the website address. Most begin with "http://." A secure site will begin with "https://."



- Attachments or links in an email can contain malware that can infect your computer. Never open an e-mail attachment or click a link unless you know the person sending it, and you were expecting them to send it to you (hackers can take over an account and make it look like it's from a friend.)
- Monitor children's online activity, and make sure they know how to practice good cyber security. Visit the U.S. Computer Emergency Readiness Team's (UC-CERT) website for security tips on how to keep children safe online (<https://www.us-cert.gov/ncas/tips/ST05-002>).

- Always use a different password for each account. Stick to longer passwords that include a combination of numbers, special characters, with both lowercase and capital letters.

*Kaley Lockwood writes on consumer and cooperative affairs for the National Rural Electric Cooperative Association, the national trade association representing more than 900 local electric cooperatives. From growing suburbs to remote farming communities, electric co-ops serve as engines of economic development for 42 million Americans across 56 percent of the nation's landscape.*

Everyone plays a role in their organization's online safety and security, whether that be at home, school or work. You are the first line of defense.

### Think Before You Click

- Always hover over a link first to be sure it is safe.
- Report suspicious emails or emails from an unknown sender to your spam filter and delete them from your inbox.



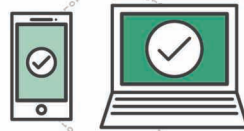
### Defend Your Computer

- The best defense against viruses, malware and other online threats is keeping your equipment up to date.
- Work with our IT staff (or provider) to keep your software, including your web browser, and operating systems current.



### Lockdown Your Log-in

- Create long and unique passwords. Use familiar phrases or song lyrics you'll remember.
- When possible, use 2-factor authentication as a second layer of defense.
- Change passwords regularly, and do not share them.



### Protect Sensitive Information

- Use encryption to protect sensitive data.
- Limit the spread of any attack by only accessing files and folders you need.
- Do not put confidential information in emails, or instant and text messages.



### Watch for Red Flags to Identify Potential Phish Attacks

- Phishing attempts seek to steal or compromise data and will often mimic a known sender.

#### Look for red flags:

1. the email is unexpected;
2. there is a sense of urgency conveyed;
3. there is an offer that seems too good to be true; and/or
4. there are typos and misspellings.



### Practice Good Cyber Hygiene On the Go

- Treat all public Wi-Fi networks as a security risk, and don't make financial or other sensitive transactions over public networks.



Want more tips to improve your cyber hygiene?  
Visit [www.staysafeonline.org](http://www.staysafeonline.org).

# We Love Our Lineman Families

Laura London

LLondon@lakeregion.coop

National Linemen Appreciation Day is the second Monday in April; this year that date is April 13. We appreciate our linemen here at Lake Region Electric Association every day, but we want to give them a little extra appreciation on this day! Lake Region Electric Association currently has 21 full-time employees. Seven of these dedicated people make up the Operations Department: Manager Jim Grimes, Foreman Dan Williams, and five journeymen linemen: Tyler Aadland, Bryce Jorgenson, Matthew Lynde, Jesse Pesall and Shawn Schmidt. Without our linemen, it would be impossible for Lake Region Electric Association to operate. These five full-time linemen and one line foreman are responsible for servicing 1,734 miles of power lines going out to the members of Lake Region Electric Association. Any given day, they travel a service area that covers 2,180 square miles. We depend on them. They depend on each other. The linemen have a brother-like bond and consider one another family. They must support and depend on each other to get work done safely and efficiently so that they can return home to their loved ones at the end of each day.

So, what happens when the typical workday ends and these guys cruise out of the parking lot? Like many of us, they may be running some errands or picking children up from daycare. Sometimes though, the days seem to last forever. Bad weather or random issues often keep the guys from going home or it calls them back after they've been home, unfortunately, just as they sit down for a meal or get ready for bed. Getting called away from their family is one of the greatest sacrifices these guys make. We not only appreciate our linemen, but we appreciate the sacrifices that their families make so that the members of LREA can have power. I asked some of our linemen's spouses and parents a few questions about their linemen and family life.

**Tyler Aadland** has been a journeyman linemen at Lake Region Electric Association since 2008. Tyler has three small children full of energy and spunk. Tyler's wife, Briana, shared a little bit about how Tyler's work at Lake Region Electric impacts their family. "It's frustrating when he has to miss out on the kids' events or holidays because of work. Outages never come at "convenient" times. It's always while you are sleeping or sitting down to eat. During the ice storm in 2016, Tyler was called out before the kids even got to open their Christmas presents and we didn't see him most of the week except



The Tyler Aadland family.

## National Line Worker Appreciation Day April 13

NRECA Board Resolution (2015)

"Whereas linemen leave their families and put their lives on the line every day to keep the power on; Whereas linemen work 365 days a year under dangerous conditions to build, maintain and repair the electric infrastructure; Whereas linemen are the first responders of the electric cooperative family, getting power back on and making things safe for all after storms and accidents; and Whereas there would be no electric cooperatives without the brave men and women who comprise our corps of linemen; Therefore be it resolved that NRECA recognize the Second Monday of April of each year as National Lineman Appreciation Day and make available to electric cooperatives, materials and support to recognize the contributions of these valuable men and women to America's Electric Cooperatives.

at bedtime." Briana went on to say, "Tyler is a hard worker, so I always appreciate when the linemen are recognized during storm jobs for their long hours and hard work." Her biggest concern, though, is for Tyler's safety,

"I don't think people realize how long of days/nights these guys put in when there are outages or how little sleep they can truly function on. When we are home and in the basement because of tornado warnings or hunkered down because of a blizzard or it's -30 degrees, Tyler is leaving to go to work and it's hard to watch him walk out the door during those time knowing how dangerous it can be."

Tyler's parents, Gary and Beth Aadland of rural Pierpont, always knew that he would have a career that was outdoors. "He was always outside, no matter the weather." They were supportive of Tyler becoming a lineman. "We were sure it was better than sitting behind a desk, as he is an outdoor person and he likes to work with his hands." They feel that

being a lineman is a good job that enables him to support his family and stay local. Family is important to the Aadlands and they agree with Briana that being called out during ice storms



Mathew and Megan Lynde are expecting twins.



Bryce and Jenny Jorgenson

family. Journeyman Lineman **Mathew Lynde** and his wife, Megan, are expecting twins this spring. They are pretty busy preparing for the arrival of the little ones. Matt is looking forward to being a dad. Right now, however, he worries about the health of his wife and babies and frets over Megan's comfort.

**Bryce Jorgenson's** wife, Jenny, recognizes her husband's dedication to his job, the members he serves and to his co-workers. Jenny said, "I cannot picture Bryce doing any other work. Bryce started at LREA in high school mowing the lawn. Since then, his goal was always to be a lineman." When asked what she thought Bryce might be doing if he wasn't a lineman, her response still involved the outdoors, "When Bryce was a kid, he always said he wanted to be a garbage truck driver. (His fascination with driving big trucks may have played a role in his



The Dan Williams Family



Shawn Schmidt

ultimate decision to become a lineman where he also drives big trucks.) As a kid, Bryce also had an intense interest with bird books. Based on Bryce's interests when he was young, if he was not a lineman, he would probably be either a garbage truck driver or a wildlife biologist."



Jesse Pesall

and holidays is incredibly frustrating! Gary and Beth are very proud of their son and the work he does, "Linemen do not get enough credit for the job that they do."

**Shawn Schmidt** is also a journeyman lineman at LREA. His wife, Lonna's, greatest concern about Shawn's job is that he is working under safe conditions and that he returns home safely. When Lonna asked the couple's sons about their dad's job they responded with pride, "Dad is very brave for climbing those poles." They also said, "He is very helpful to get people's power back on when it is out." Shawn is an avid fisherman and Lonna says that if he wasn't a lineman, he would be a full-time fisherman.

There is definitely a correlation between the love of outdoors and the linemen at Lake Region Electric Association! Speaking with **Jesse Pesall's** dad, Darrin, he said that he knew Jesse would do something where he would be working with his hands and where he could be outside. Darrin is concerned for Jesse's safety but doesn't let it worry him too much, "It's dangerous work but things can happen anywhere. Jesse is a good kid; he's careful." Darrin views Jesse's job as rewarding, "He has a really good job. He works hard, he supports himself and all of his hobbies."

We will soon have some new additions to our Lake Region

As with other families of our linemen, Jenny finds it frustrating when work interferes with family and social events. "The most frustrating part of Bryce's job is also the part that is most rewarding. Bryce is able to help people when they have a power outage. Having a power outage for an extended period of time negatively impacts people's lives. Bryce is always concerned about who is around to take a call if there is a power outage and if he should stay around town in case he is needed to help. What I find most rewarding about Bryce's job is that Bryce is able to work at a place where he cares about helping the consumers and making sure they have power." She continued by talking about the fellowship Bryce has with his coworkers. "One of the great things about Bryce working for LREA are his coworkers. Bryce is able to work with some of his closest friends. He was friends with some of his coworkers before they became coworkers, and others Bryce has become friends with through LREA. Working with someone for 40-plus hours a week is not enough for Bryce. Outside of work, the linemen and electricians have a relationship. Whether it's help moving something or going out fishing together, they choose to have a relationship outside of work. Because of LREA, we have built friendships with people that we might not have otherwise met or had the opportunity to get to know."



# Are You Flood Ready?

**Brenda Kleinjan**

editor@sdrea.coop

Wisdom has it that April showers bring May flowers, but in much of South Dakota, April showers may bring more water woes to areas that exited 2019 with saturated soils.

In late February, the National Weather Service issued its spring flood outlook for rivers and streams in eastern South Dakota, portions of central South Dakota, and portions of west central Minnesota.

“Due to the very wet conditions across the area late last summer and into last fall, the chances for minor, moderate, or major flooding are above normal across the eastern and central parts of the area, with lesser chances across the west,” the NWS office in Aberdeen wrote in its release.

Of the 68 river gauges located in South Dakota, 37 show more than 50 percent chance of minor, moderate or major flooding in April and May. The areas shown at risk are in central and eastern South Dakota along the James, Big Sioux, Vermillion and White rivers. (View the map at [https://water.weather.gov/ahps/region\\_long\\_range.php?state=sd&percent=50](https://water.weather.gov/ahps/region_long_range.php?state=sd&percent=50))

The flood threat through this spring, both in location and severity, will be determined by future rain or snowfall, and how fast the melting of snowpack occurs. In late February, the 90-day outlook through the end of May contained no strong indication of any abnormally warm/cold or moist/dry trends.

The chances for river flooding are near to above normal, with well above normal chances for the James River and Big Sioux River basins.

There is a wide range of snow depths across the area. Most areas west of the Missouri River have a trace to 2 inches, while east of the James River Valley is a thicker snow pack generally ranging from 8 to 20 inches.

With wet conditions last fall heading into the freeze-up, the soils were fairly well saturated as they froze, which will make them much more impervious to soaking up much of the snow melt as it occurs.



Flooding in southeastern South Dakota last fall, which followed spring flooding, inundated roads and farmland.

## Flooding 411

Flooding is the nation’s most common natural disaster. Flooding can happen in every U.S. state and territory. However, all floods are not alike. Some can develop slowly during an extended period of rain, or in a warming trend following a heavy snow. Others, such as flash floods, can occur quickly, even without any visible signs of rain. Be prepared for flooding no matter where you live, but particularly if you are in a low-lying area, near water or downstream from a dam. Even a very small stream or dry creek bed can overflow and create flooding.

### Prepare for Flooding

- Elevate the furnace, water heater, and electric panel in your home if you live in an area that has a high flood risk.
- Consider installing “check valves” to prevent flood water from backing up into the drains of your home.
- If feasible, construct barriers to stop floodwater from entering the building and seal walls in basements with waterproofing compounds.
- Property insurance does not typically cover flood damage. Talk to your insurance provider about your policy and consider if you need additional coverage.
- Get a kit of emergency supplies and prepare a portable kit in case you have to evacuate.
- Familiarize yourself with the terms that are used to identify a thunderstorm hazard, including understanding the difference between a severe thunderstorm watch and a severe thunderstorm warning.
- A flood watch or flash flood warning means there is a possibility of flooding or a flash flood in your area.

### Be Prepared to Evacuate

- If time allows, bring in outside furniture and move your

# 3 SIMPLE STEPS FOR FLASH FLOOD SAFETY

During a flood, water levels and the rate at which the water is flowing can quickly change. Remain aware and monitor local radio and television.



[weather.gov/flood](https://www.weather.gov/flood)

## 1 GET TO HIGHER GROUND

Get out of the areas subject to flooding

## 2 DO NOT DRIVE INTO WATER

Do NOT drive or walk into flooded areas. It only takes 6" of water to knock you off your feet.

## 3 STAY INFORMED

Monitor local radar, television, weather radio, internet or social media for updates.

valuables to higher places in your home. Unplug electrical appliances, moving them to higher levels, if possible. However, do not touch an electric appliance if you are wet or standing in water.

- If you have a car, fill the gas tank in case you have to evacuate.
- A flood warning means a flood is occurring or will likely occur soon. If you are advised to evacuate do so immediately.
- A flash flood warning means a flash flood is occurring. Seek higher ground immediately; do not wait for instructions.
- Visit NOAA Watch for more weather-related information.

### Plan to Evacuate

- Plan how you will leave and where you will go if you are advised to evacuate.
- If you do not have a car, plan alternate means of evacuating.
- Plan places where your family will meet, both within and outside of your immediate neighborhood.
- Identify several places you could go in an emergency, a friend's home in another town, a motel or public shelter.
- If you have a car, keep a half tank of gas in it at all times in case you need to evacuate.

- Become familiar with alternate routes and other means of transportation out of your area.
- Take your emergency supply kit.
- Lock the door behind you.
- Listen to NOAA Weather Radio for information.
- Take your pets with you, but understand that only service animals may be permitted in public shelters. Plan how you will care for your pets in an emergency.
- Call or email the "out-of-state" contact in your family communications plan.
- Tell them where you are going.
- Leave a note telling others when you left and where you are going.
- Check with neighbors who may need a ride.
- Do not walk through moving water, if possible. Look for areas where the water is not moving. What might seem like a small amount of moving water can easily knock you down.
- Do not drive into flooded areas. If your vehicle becomes surrounded by rising water, get out quickly and move to higher ground, if possible.

### Stay Informed

- Local authorities may not immediately be able to provide information on what is happening and what you should do. However,

you should listen to NOAA Weather Radio, watch TV, listen to the radio or check the Internet often for official news and instructions as they become available.

- If it has been raining hard for several hours or if it has been raining steadily for days there may be the potential for flooding. Use common sense and available information. If water is rising quickly or you see a moving wall of mud or debris, immediately move to higher ground.
- Stay out of flood waters, if possible. The water may be contaminated or electrically charged. However, should you find yourself trapped in your vehicle in rising water get out immediately and seek higher ground.
- Stay away from downed power lines to avoid the risk of electric shock or electrocution.
- Do not return to your home until local authorities say it is safe. Even after flood waters recede, roads may be weakened and could collapse. Buildings may be unstable, and drinking water may be contaminated.
- Use common sense and exercise caution.

For more information on how you can be prepared for a flood, visit <https://www.floodsmart.gov/>.





# Registration Open for Basin Tour 2020

Lake Region Electric Association, Inc. is once again partnering with FEM Electric to sponsor an enjoyable tour to Basin Electric Power Cooperative's Antelope Valley Station in North Dakota. The Basin Tour is open to active members of Lake Region Electric. The tour will be held July 28-29, 2020. There is minimal cost to our members; only \$25 per couple! The registrant for the tour must be an active member of Lake Region Electric Association. This small fee will be added to the registrant's July electric bill. Lake Region Electric provides transportation via coach charter bus, all meals and overnight

accommodations (double occupancy) for one night and a riverboat excursion. Reservations are limited and on a first-come, first-served basis.

## Tour Highlights

- Wilton Windfarm
- Riverboat Dinner and Sightseeing Cruise
- Dakota Gasification Plant
- Antelope Valley Station
- Freedom Coal Mine

We encourage our members to seize this opportunity to participate in a fun-filled and informative couple of days! See firsthand where our power comes from and how it gets to your homes and businesses. Register today to be assured a space for this exciting opportunity; reservations are limited and on a first-come, first-served basis.

If you would like further information regarding a planned tour of Basin Electric, contact Manager of Member Services Brett Kwasniewski at 605-345-3379 or by email [bkwasniewski@lakeregion.coop](mailto:bkwasniewski@lakeregion.coop).

### Basin Electric Tour Application

LREA Member Name: \_\_\_\_\_

Telephone: \_\_\_\_\_ E-mail Address: \_\_\_\_\_

Mailing Address: \_\_\_\_\_

Guest Name: \_\_\_\_\_

Telephone: \_\_\_\_\_ E-mail Address: \_\_\_\_\_

Mailing Address (if different from above): \_\_\_\_\_

Please indicate pick up location:  Webster (6:15 a.m.)  Bristol (6:30 a.m.)  Groton (7 a.m.)

Members attending the trip will be billed a one-time charge of \$25 on July's electric bill. Cancellations must be made at least one week prior to the trip or you will be charged. Exceptions will be made for an emergency or allowable circumstances at the discretion of the LREA Manager of Member Services.

**Return this form to:** Lake Region Electric Association, PO Box 341, Webster SD 57274



# Help Keep Our Crews Safe

**Laura London**

LLondon@lakeregion.coop

Construction season is starting soon across our great state; you will be asked to slow down, move over and be generally inconvenienced. While Lake Region Electric Association also has a “construction season” of sorts, our crews are out working year-round. Whether they are doing construction or repairs on your property or on the side of the road, we ask that you help keep them safe. Our linemen, electricians, materials clerk and others risk their lives on a regular basis when working with high voltage and heavy-duty equipment, oftentimes in hazardous weather conditions.

Safety is our priority. We need our crews to return safe every day; we also want to keep the public safe. Below are a few things to keep in mind when you see utility trucks and our crews.

### Give Them Room

The Lake Region Electric Association crews serve mostly rural areas; most of our guys are from the area and know our members on a personal basis. Members are often incredibly helpful explaining to our crews where a specific problem has been observed and helping them get to areas that are difficult to access. We appreciate and welcome this sort of help when it is needed. In fact, we may ask our members for help at certain times. However, always keep in mind that a work zone is just that. Work zones are meant for working, not to satisfy curiosities. This is not a good place to visit or ask questions. If you have questions or would like to talk with someone regarding work that is taking place, please call our office and we will connect you with someone who can get you answers. You can also leave a message for a specific person to call you back.

- Please stay away unless otherwise authorized.
- Always keep children away from work zones.
- Keep your pets indoors while crews are working in your area – even friendly dogs and cats can be hazardous when working around high voltage and heavy equipment.

### On the Road

Power poles and electrical equipment line streets and highways, and narrow roadways often require crews to place their equipment in traffic lanes. Their work activities are often taken for granted but benefit us all and, like everyone, they deserve a safe workplace. Be alert to utility crews and other work zone workers for their safety as well as yours. To help prevent fatalities and injuries, Safe Electricity recommends the following guidelines while driving:

- Keep a safe distance between your vehicle and traffic barriers, trucks, construction equipment and workers.
- Be patient. Traffic delays are sometimes unavoidable, so try to

- allow time for unexpected occurrences in your schedule.
- Obey all signs and road crew flag instructions.
- Merge early and be courteous to other drivers.
- Use your headlights at dusk and during inclement weather.
- Minimize distractions. Avoid activities such as operating a cell phone or radio or eating while driving.

South Dakota does not have a law specifically geared to utility vehicles, however, utility trucks parked on the side of the road with their yellow or amber lights flashing are covered under the Move Over Law. According to Lieutenant Walters of the South Dakota Highway Patrol, South Dakota law does not separate (non-emergency) vehicles. This law is meant to protect everyone who uses the roads and covers any vehicle pulled over on the side of a public roadway with their amber lights flashing. Lt. Walters sums up the Move Over Law by simply saying, “We want everyone to be safe, whether they are out there working or it’s your family member out changing a tire.”

According to the South Dakota Department of Public Safety, the law requires motorists to stop when coming from any direction and approaching any stopped authorized emergency vehicle using red visual signals/lights. Motorists are also required to move over and slow down when passing any vehicle displaying amber or yellow flashing signals/lights.

If driving on an interstate highway or other highway with two or more lanes traveling in the same direction as the vehicle, merge into the lane farthest from the vehicle and proceed with caution, unless otherwise directed.

If driving on a two-lane highway, slow to a speed that is at least 20 miles per hour less than the posted speed limit or five miles per hour when the speed limit is posted at 20 miles per hour or less and proceed with caution, unless otherwise directed.

The men and women who work to bring you power every day appreciate your efforts to help make sure our crews safely return to the LREA headquarters every day so that they can go home to their families.

**People Killed in All Crashes and Distraction-Affected Crashes, by Person Type, 2017**

Person Type	All Fatalities in Crashes	Percentage of All Fatalities	Fatalities in Distraction-Affected Crashes	Percentage of Distraction-Affected Fatalities
<b>Total</b>	37,133	100%	3,166	100%
<b>Occupants</b>				
Driver	23,611	64%	1,832	58%
Passenger	6,534	18%	735	23%
<b>Total Occupants</b>	<b>30,145</b>	<b>81%</b>	<b>2,567</b>	<b>81%</b>
<b>Nonoccupants</b>				
Pedestrian	5,977	16%	497	16%
Pedalcyclist	783	2%	70	2%
Other	228	1%	32	1%
<b>Total Nonoccupants</b>	<b>6,988</b>	<b>19%</b>	<b>599</b>	<b>19%</b>

Source: FARS 2017 ARF

### Don't Drive Distracted!

According to the National Highway Transportation Safety Administration (NHTSA), in 2017 there were 599 nonoccupants (pedestrians, bicyclists, and others) killed in distraction-affected crashes.

As defined in the Overview of the National Highway Traffic Safety Administration's Driver Distraction Program, distraction is a specific type of inattention that occurs when drivers divert their attention from the driving task to focus on some other activity instead.

---

**December 15-March 31**

South Dakota snowmobile trails season, Lead, SD, 605-584-3896

---

**March 19-21**

SD State A High School Boys and Girls Basketball Tournament, Rushmore Plaza Civic Center, Rapid City, SD, 605-224-9261

---

**March 19-21**

SD State AA High School Boys and Girls Basketball Tournament, Sanford Premier Center, Sioux Falls, SD, 605-224-9261

---

**March 19-21**

SD State B High School Boys Basketball Tournament, Barnett Center, Aberdeen, SD, 605-224-9261

---

**March 20-21, 27-28**

Annual Schmeckfest, Freeman, SD, 605-925-4237

---

**March 21-22**

Dakota Territory Gun Collectors Gun Show, Gun Show, Codington County Ag Building, Watertown, SD, 701-361-9215

---

**March 28**

Annual Ag Day at the Washington Pavilion, Sioux Falls, SD, 605-367-6000

---

**March 28**

SD High School All-State Band Concert, Mitchell Fine Arts Center, Mitchell, SD, 605-224-9261

---

**April 3-4**

Forks, Corks and Kegs Food, Wine and Beer Festival, Deadwood, SD, 605-578-1876 or 800-999-1876

---

**March 18,  
June 11,  
Aug. 13 and  
Oct. 8**

Kids Mystery  
Dinner Theater,  
Brookings, SD,  
605-692-6700



Photo courtesy: Children's Museum of S.D.

---

**April 4-5**

Annual USD Wacipi, Vermillion, SD

---

**April 11**

Eggstravaganza, Rapid City, SD, 605-716-7979

---

**April 17-19**

First Dakota Classic Archery Tournament, Yankton, SD, 605-260-9282

---

**April 18**

Black Hills Gold & Treasure Show, Rapid City, SD

---

**April 25**

River Rat Marathon, Yankton, SD, 605-660-9483

---

**May 5-6**

Energize! Explore Innovative Rural Communities Conference, Milbank, SD, <https://extension.sdstate.edu>

---

**May 29-30**

South Dakota Regional Senior Games, Sioux Falls, SD, Contact Nick Brady at 605-978-6924

---

**June 5-7**

Regional Qualifying High School Rodeos:

- Rodeo Grounds, Wall, SD, 605-529-5868
- Rodeo Grounds, Highmore, SD, 605-529-5868
- Tipperary Arena, Buffalo, SD, 605-529-5868
- Heartland Arena, Huron, SD, 605-529-5868

---

**June 12-14**

Regional Qualifying High School Rodeos:

- Tripp County Fairgrounds, Winner, SD, 605-529-5868
- Rodeo Grounds, Sturgis, SD, 605-529-5868
- Rodeo Grounds, Dupree, SD, 605-529-5868
- Derby Downs Arena, Watertown, SD, 605-529-5868

---

**June 16-21**

SD State High School Finals Rodeo, Stanley County Fairgrounds, Fort Pierre, SD, 605-529-5868

---

**June 25-27**

31st Annual Red Power Round Up, Fairgrounds, Huron, SD, Contact Steve Masat at 605-460-0197 or Dennis Schilling at 605-354-2867, [redpowerroundup2020.com](http://redpowerroundup2020.com)

---

**July 14**

Rock Nobles Cattlemen 2020 Summer Beef Tour, Nobles County Fairgrounds, Register Before June 1: \$20, After June 1: \$40, Worthington, MN, 507-967-2380, [www.mnsca.org](http://www.mnsca.org)

**To have your event listed on this page, send complete information, including date, event, place and contact to your local electric cooperative. Include your name, address and daytime telephone number. Information must be submitted at least eight weeks prior to your event. Please call ahead to confirm date, time and location of event.**